

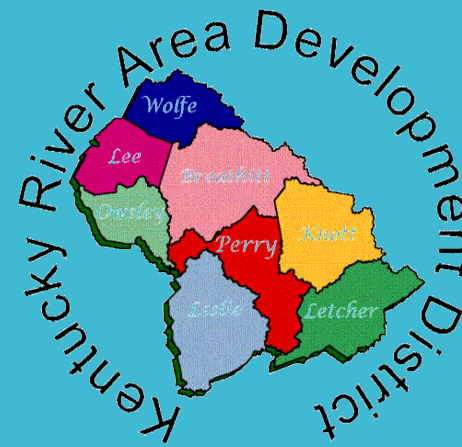
# ADD Socioeconomic Profiles

Eunice Holland

Transportation Planner

ADD Planner Assistance Program Coordinator

Kentucky River ADD



BARREN RIVER



# Profiles

- Socioeconomic data is collected annually by the US Census Bureau with the American Community Survey
- Coordination with the Kentucky State Data Center at the University of Louisville
- Develop GIS file and Maps
- Complete regional analysis
- Demographics
  - Age
  - Race
  - Income
  - Disability
  - English Proficiency

GEO_ID id	NAME Geographic Area Name	COUNTY	Mpop_Per	Fpop_Perc	Ageov65_Ma	Ageov65_Fe	Ageov65_Pe	B01001_001E	B01001_002E	B01001_003E	B01001_004E	B01001_005E
								Estimate!!Tot:	Estimate!!Tot:	Estimate!!Tot:	Estimate!!Tot:	Estimate!!Tot:
1500000US210019701001	Block Group 1, Census Tract 9701, Adair County, Kentucky	Adair	0.455621302	0.544378698	116	105	0.261538462	845	385	40	12	10
1500000US210019701002	Block Group 2, Census Tract 9701, Adair County, Kentucky	Adair	0.476377953	0.523622047	70	58	0.167979003	762	363	10	37	16
1500000US210019702001	Block Group 1, Census Tract 9702, Adair County, Kentucky	Adair	0.498252621	0.501747379	214	153	0.183225162	2003	998	51	34	55
1500000US210019703001	Block Group 1, Census Tract 9703, Adair County, Kentucky	Adair	0.458108108	0.541891892	63	114	0.239189189	740	339	12	24	0
1500000US210019703002	Block Group 2, Census Tract 9703, Adair County, Kentucky	Adair	0.580786026	0.419213974	171	127	0.185901435	1603	931	73	96	61
1500000US210019703003	Block Group 3, Census Tract 9703, Adair County, Kentucky	Adair	0.561748634	0.438251366	49	99	0.161748634	915	514	0	9	48
1500000US210019704011	Block Group 1, Census Tract 9704.01, Adair County, Kentucky	Adair	0.502089552	0.497910448	52	107	0.094925373	1675	841	105	14	97
1500000US210019704012	Block Group 2, Census Tract 9704.01, Adair County, Kentucky	Adair	0.336945813	0.663054187	92	176	0.264039409	1015	342	0	0	16
1500000US210019704013	Block Group 3, Census Tract 9704.01, Adair County, Kentucky	Adair	0.448979592	0.551020408	255	308	0.328279883	1715	770	115	12	31
1500000US210019704021	Block Group 1, Census Tract 9704.02, Adair County, Kentucky	Adair	0.514200299	0.485799701	163	162	0.161933234	2007	1032	51	159	52
1500000US210019704022	Block Group 2, Census Tract 9704.02, Adair County, Kentucky	Adair	0.511341542	0.488658458	9	35	0.028515878	1543	789	10	24	9
1500000US210019704023	Block Group 3, Census Tract 9704.02, Adair County, Kentucky	Adair	0.547270306	0.452729694	90	111	0.267643142	751	411	21	16	28
1500000US210019705001	Block Group 1, Census Tract 9705, Adair County, Kentucky	Adair	0.525059666	0.474940334	93	116	0.166268894	1257	660	4	46	33
1500000US210019705002	Block Group 2, Census Tract 9705, Adair County, Kentucky	Adair	0.508408797	0.491591203	101	102	0.262613195	773	393	12	0	41
1500000US210019706001	Block Group 1, Census Tract 9706, Adair County, Kentucky	Adair	0.477132262	0.522867738	134	126	0.160692213	1618	772	31	24	85
1500000US210039201001	Block Group 1, Census Tract 9201, Allen County, Kentucky	Allen	0.51738076	0.48261924	115	123	0.19240097	1237	640	39	0	91
1500000US210039201002	Block Group 2, Census Tract 9201, Allen County, Kentucky	Allen	0.498154982	0.501845018	102	94	0.241082411	813	405	7	5	41
1500000US210039201003	Block Group 3, Census Tract 9201, Allen County, Kentucky	Allen	0.564716312	0.435283688	155	118	0.242021277	1128	637	89	36	19
1500000US210039202001	Block Group 1, Census Tract 9202, Allen County, Kentucky	Allen	0.473702789	0.526297211	234	242	0.168019767	2833	1342	103	45	78
1500000US210039203001	Block Group 1, Census Tract 9203, Allen County, Kentucky	Allen	0.561360276	0.438639724	151	216	0.180877279	2029	1139	36	163	19
1500000US210039203002	Block Group 2, Census Tract 9203, Allen County, Kentucky	Allen	0.479642502	0.520357498	184	203	0.192154916	2014	966	35	66	152
1500000US210039203003	Block Group 3, Census Tract 9203, Allen County, Kentucky	Allen	0.412420382	0.587579618	17	124	0.224522293	628	259	55	48	0
1500000US210039203004	Block Group 4, Census Tract 9203, Allen County, Kentucky	Allen	0.410658307	0.589341693	16	36	0.163009404	319	131	0	21	0
1500000US210039204001	Block Group 1, Census Tract 9204, Allen County, Kentucky	Allen	0.421965318	0.578034682	133	213	0.181818182	1903	803	11	27	13
1500000US210039204002	Block Group 2, Census Tract 9204, Allen County, Kentucky	Allen	0.461619348	0.538380652	121	110	0.242902208	951	439	0	42	11
1500000US210039204003	Block Group 3, Census Tract 9204, Allen County, Kentucky	Allen	0.581749049	0.418250951	49	18	0.05095057	1315	765	123	75	88
1500000US210039204004	Block Group 4, Census Tract 9204, Allen County, Kentucky	Allen	0.499306519	0.500693481	50	60	0.152565881	721	360	12	32	39
1500000US210039205001	Block Group 1, Census Tract 9205, Allen County, Kentucky	Allen	0.555944056	0.444055944	117	147	0.184615385	1430	795	82	6	29
1500000US210039206001	Block Group 1, Census Tract 9206, Allen County, Kentucky	Allen	0.47109067	0.52890933	89	109	0.130091984	1522	717	72	64	13
1500000US210039206002	Block Group 2, Census Tract 9206, Allen County, Kentucky	Allen	0.503569729	0.496430271	153	129	0.134221799	2101	1058	86	66	99
1500000US210059501001	Block Group 1, Census Tract 9501, Anderson County, Kentucky	Anderson	0.464451827	0.535548173	186	309	0.164451827	3010	1398	141	50	60
1500000US210059501002	Block Group 2, Census Tract 9501, Anderson County, Kentucky	Anderson	0.521697203	0.478302797	138	180	0.153326905	2074	1082	127	105	75
1500000US210059501003	Block Group 3, Census Tract 9501, Anderson County, Kentucky	Anderson	0.431407942	0.568592058	87	125	0.076534296	2770	1195	86	219	43
1500000US210059501004	Block Group 4, Census Tract 9501, Anderson County, Kentucky	Anderson	0.713024283	0.286975717	17	28	0.049668874	906	646	22	93	146
1500000US210059502011	Block Group 1, Census Tract 9502.01, Anderson County, Kentucky	Anderson	0.532490975	0.467509025	137	118	0.230144404	1108	590	13	36	62

# Data Development

# Data Development

## 2019 ACS Block Group Data Formulas

Eunice Holland, KRADD

Updated March 11, 2021

**Source: Kentucky State Data Center Census 2019 American Community Survey 5  
Year Data (2015-2019)**

### **Sex:**

Table B01001 Sex by Age

**Column: Mpop\_Perc**

Calculation: Male population % = B01001\_002E male population / B01001\_001E total population

**Column: Fpop\_Perc**

Calculation: Female population %= B01001\_026E female population / B01001\_001E total population

### **Age 65+:**

Table B01001 Sex by Age

**Column: Ageov65\_Ma**

Calculation: Male: sum of:

B01001\_020E Male 65&66  
B01001\_021E Male 67 to 69  
B01001\_022E Male 70 to 74  
B01001\_023E Male 75 to 79  
B01001\_024E Male 80 to 84  
B01001\_025E Male 85+

**Column: Ageov65\_Fe**

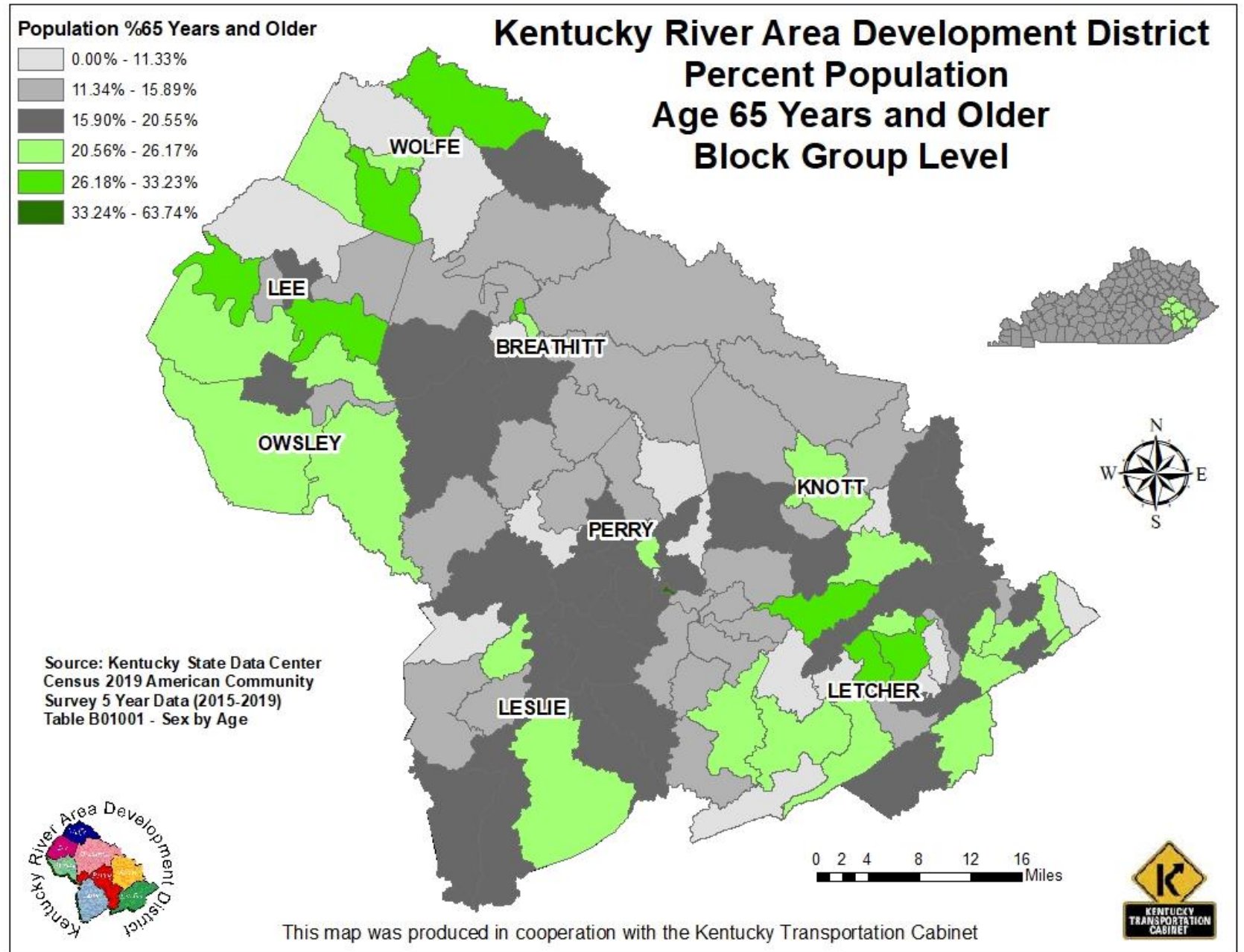
Calculation: Female: sum of:

B01001\_044E Female 65&66  
B01001\_045E Female 67 to 69  
B01001\_046E Female 70 to 74  
B01001\_047E Female 75 to 79  
B01001\_048E Female 80 to 84  
B01001\_049E Female 85+

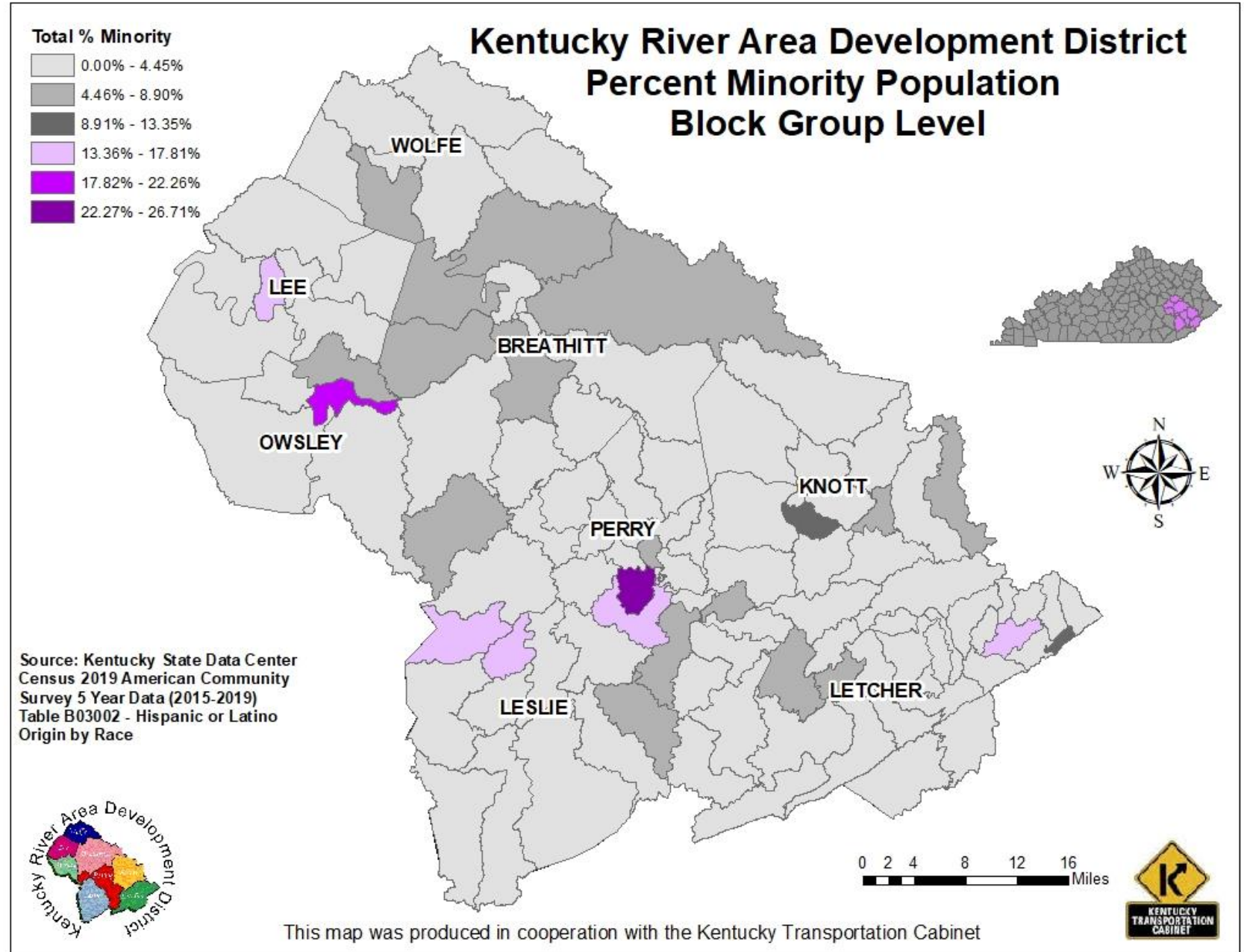
**Column: Ageov65\_Pe**

Calculation: Age 65+ %: (Ageov65\_Male + Ageov65\_Fem) / B01001\_001E total population

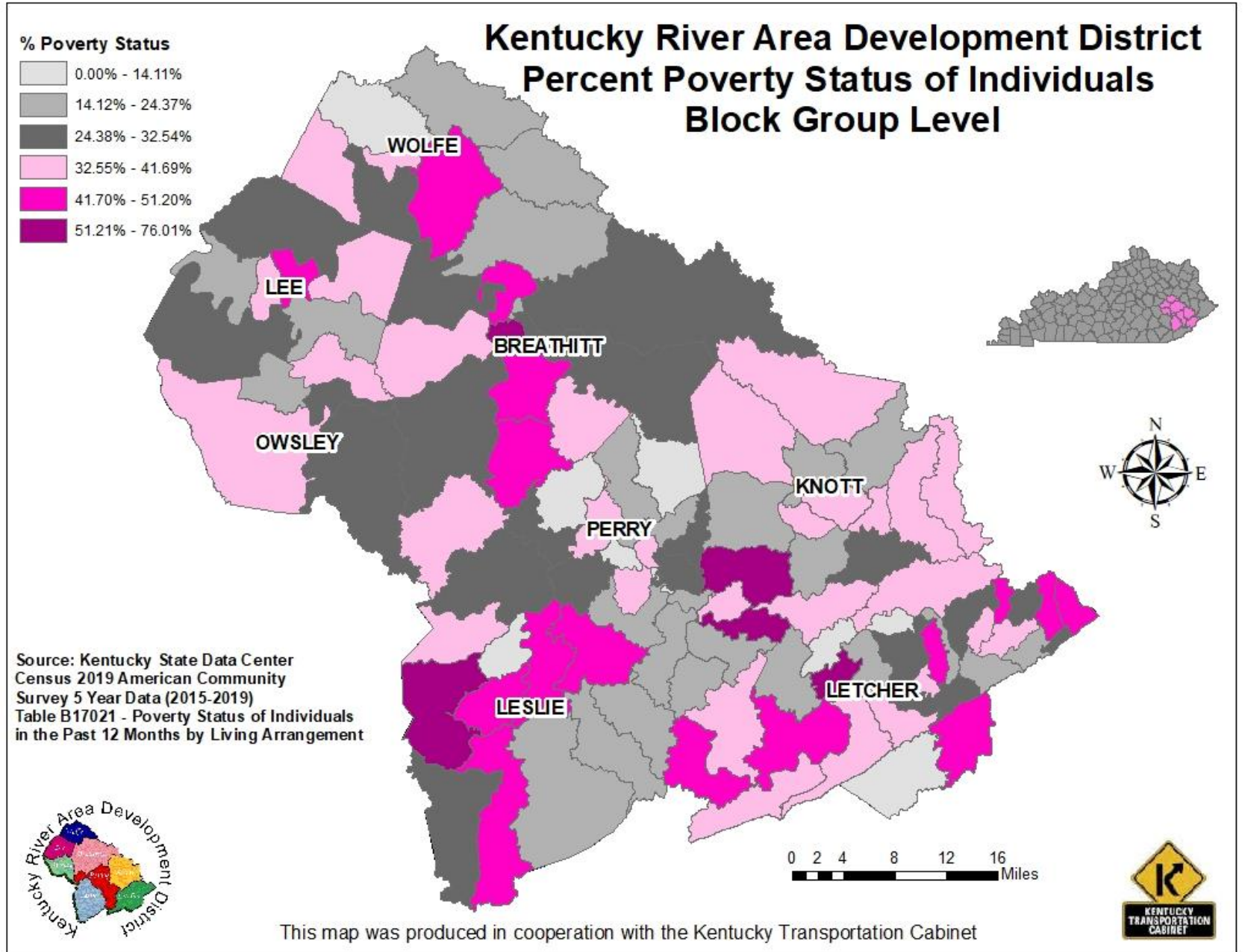
# Age



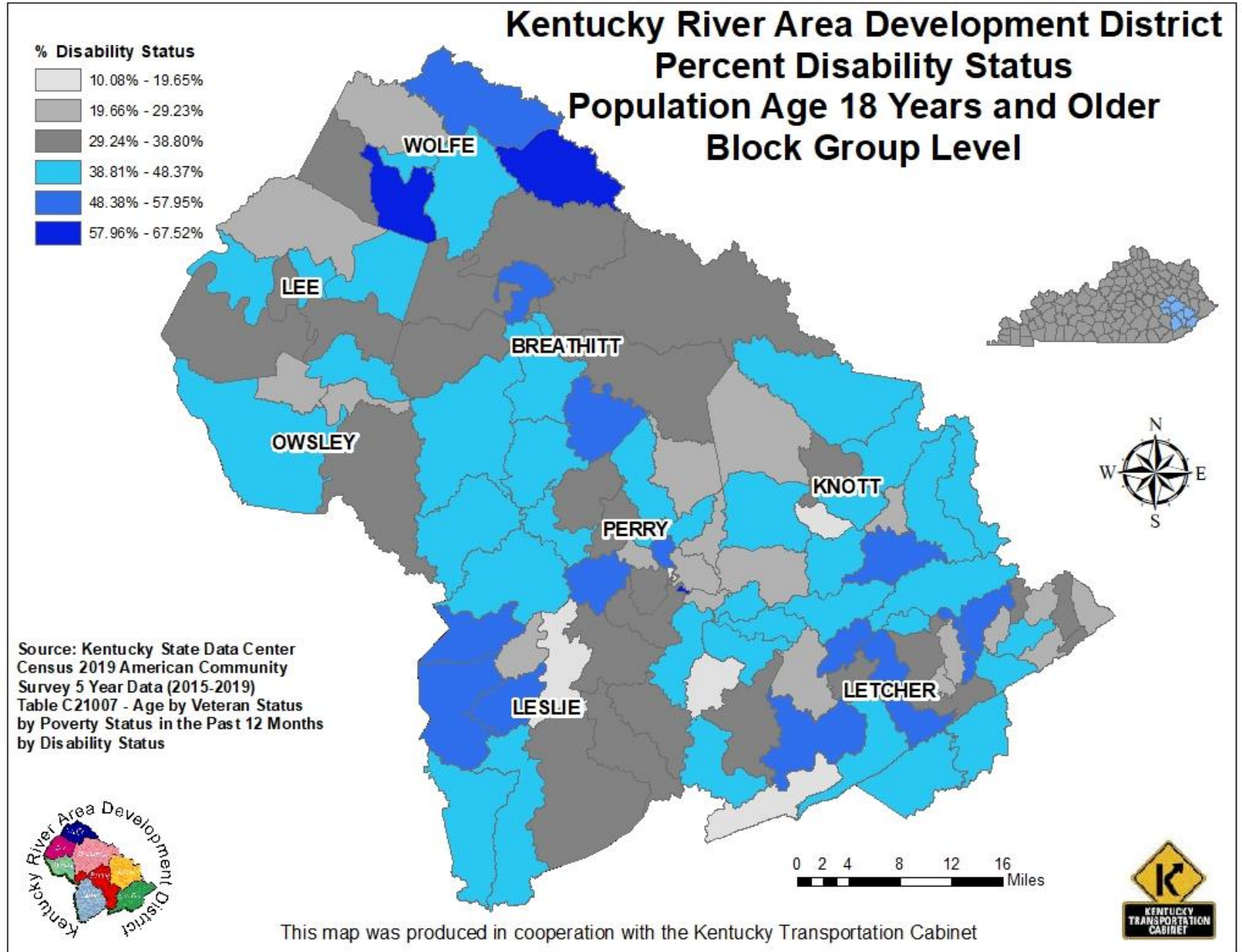
# Race



# Income



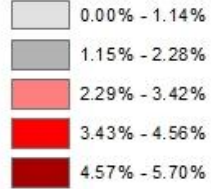
# Disability



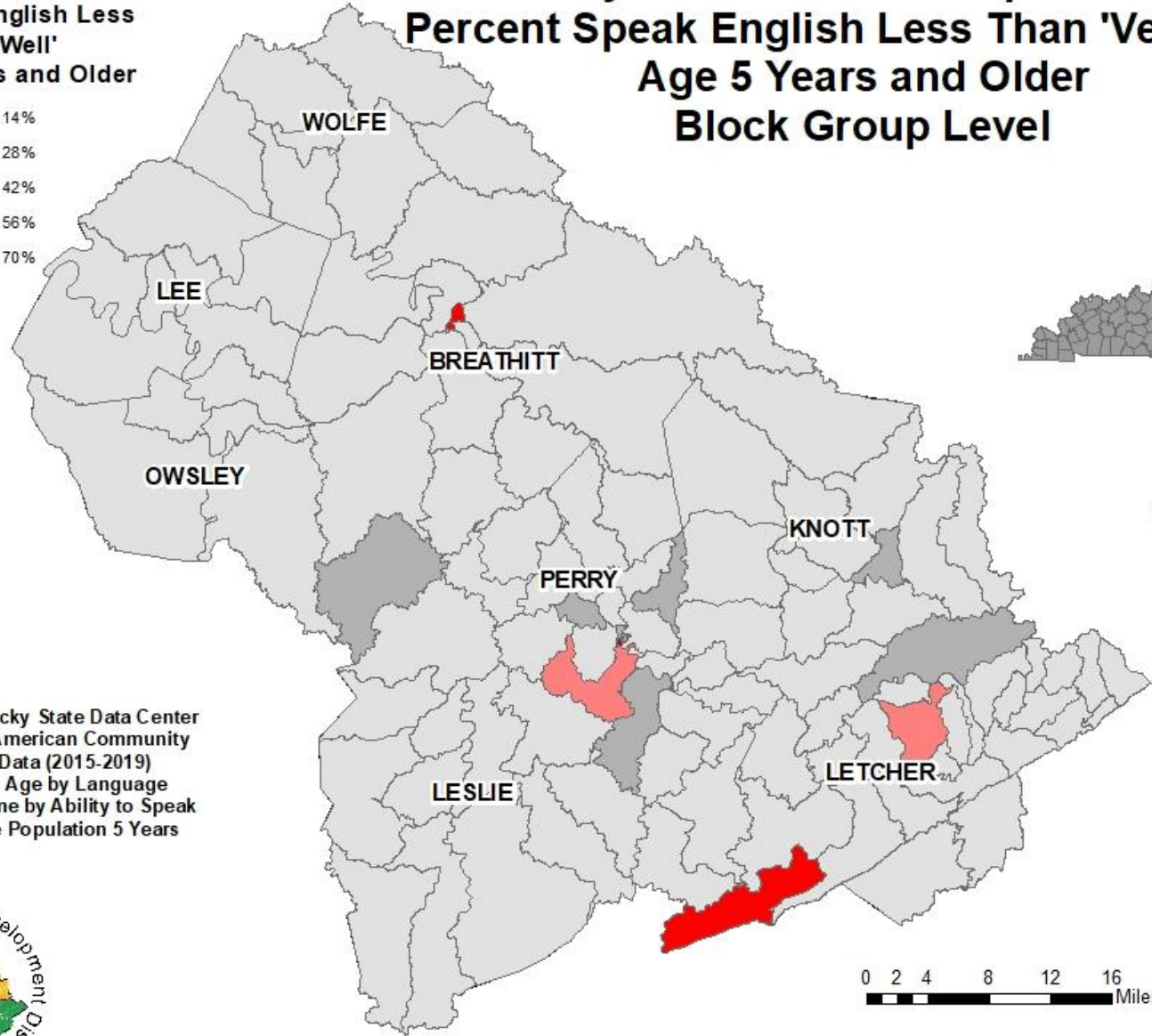


# Limited English Proficiency

% Speak English Less Than 'Very Well' Age 5 Years and Older



## Kentucky River Area Development District Percent Speak English Less Than 'Very Well' Age 5 Years and Older Block Group Level



Source: Kentucky State Data Center  
Census 2019 American Community  
Survey 5 Year Data (2015-2019)  
Table B16004 - Age by Language  
Spoken at Home by Ability to Speak  
English for the Population 5 Years  
and Over



This map was produced in cooperation with the Kentucky Transportation Cabinet

# Public Involvement Plan

## Kentucky River Area Development District

### Public Involvement Plan



941 North Main St.  
Hazard, KY 41701  
606-436-3158  
606-436-2144 (fax)  
[www.kradd.org](http://www.kradd.org)



THIS DOCUMENT WAS PREPARED IN COOPERATION WITH THE KENTUCKY TRANSPORTATION CABINET

## 4.4 Summary Quick Facts

The Kentucky River Area Development District (KRADD) is composed of eight counties: Breathitt, Knott, Lee, Leslie, Letcher, Owsley, Perry and Wolfe. In 2018, KRADD comprised 2.41% of the state's population.

### ADD Quick Facts

Statewide, KRADD contains:

- 0.72 % of the Black population
- 0.46 % of the Asian population
- 0.83 % of the Hispanic population
- 4.31 % of the below poverty population
- 2.61 % of the age 65 years old and over population
- 4.10 % of the disabilities tallied age 18 and over
- 0.50 % of the population over the age of 5 who speak English less than very well

### KRADD Counties Quick Facts

- Perry County has the largest total population in the KRADD region; Owsley County has the smallest.
- Perry County has the largest overall Black population in the region with 306.
- Perry County has the highest population of the region's Hispanic population, with 271.
- There are 18,043 individuals in the Kentucky River ADD who are over the age of 65. The elderly population is the highest in Perry (4,220) and Letcher (4,067) Counties.
- Leslie County has the highest concentration of low-income residents, with 3,553 which represents 35.56 % of the county population. Breathitt County has the second highest with 35.54% of the population with low-income.
- The region has 28,630 persons with a disability age 18 and over; percentage wise, all eight counties range from 34.07 % to 40.24 % in this category.
- Perry County has the highest number of persons with a disability age 18 and over, with 7,236.
- Wolfe County has the highest concentration of persons with a disability age 18 and over which represents 40.24 % or 2,181 of the county population.
- Perry County has the highest percentage of the population over the age of 5 who speak English less than very well with 1.00%.

# Socioeconomic Studies

KENTUCKY RIVER AREA DEVELOPMENT DISTRICT

## Wendell H. Ford Airport Access Study Perry County

Socioeconomic Study  
FINAL  
January 2018

Prepared for  
Kentucky Transportation Cabinet (KYTC) – Division of Planning



Prepared by  
Kentucky River Area Development District



This document was prepared in cooperation with the Kentucky Transportation Cabinet.

FINAL Socioeconomic Study, Wendell H. Ford Airport Access Study

## Methodology

The data was collected using the method outlined by the KYTC document “Methodology for Assessing Potential Environmental Justice Concerns for KYTC Planning Studies”. The demographics of the affected area should be defined using U.S. Census Bureau data and the percentages for minorities, poverty status, elderly, LEP, and disabled populations should be compared to the Census tracts and block groups, the county as a whole, the entire state and the United States.

The primary source of data for this report is the 2011-2015 US Census Bureau American Community Survey including tables:

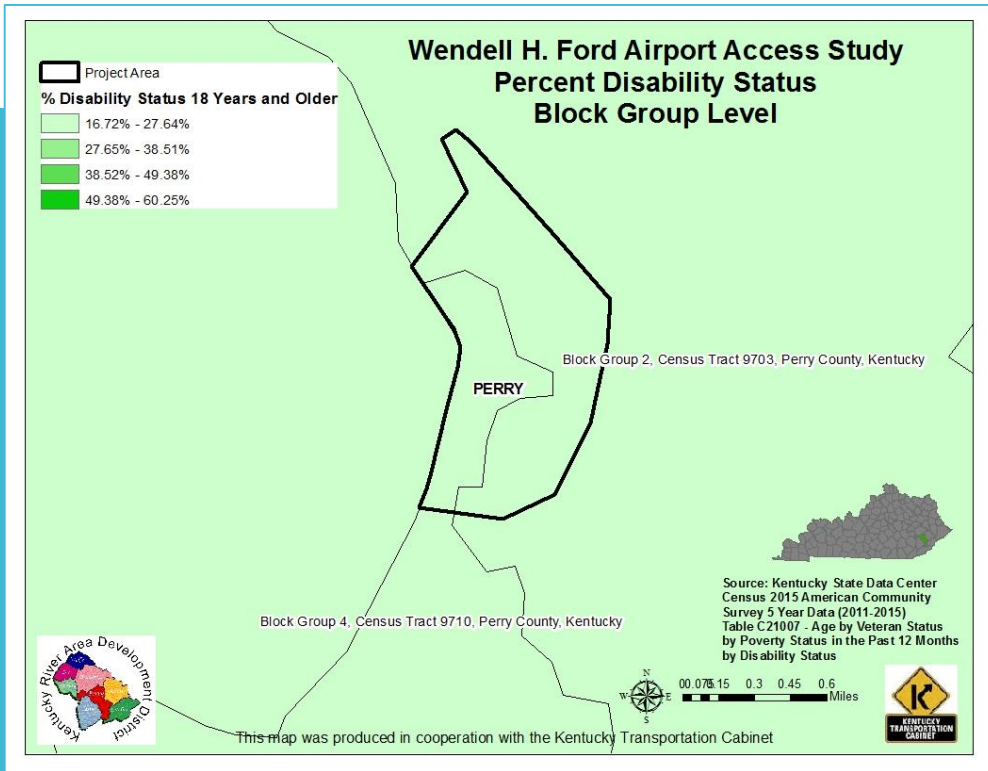
- B01001 - Sex by Age
- B03002 - Hispanic or Latino Origin by Race
- B16004 - Age by Language Spoken at Home by Ability to Speak English for the Population 5 Years and Over
- B17021 - Poverty Status of Individuals in the Past 12 Months by Living Arrangement
- C21007 - Age by Veteran Status by Poverty Status in the Past 12 Months by Disability Status

The data presented in this document is intended to highlight areas of concern that will require additional analysis should any project be advanced to future phases.

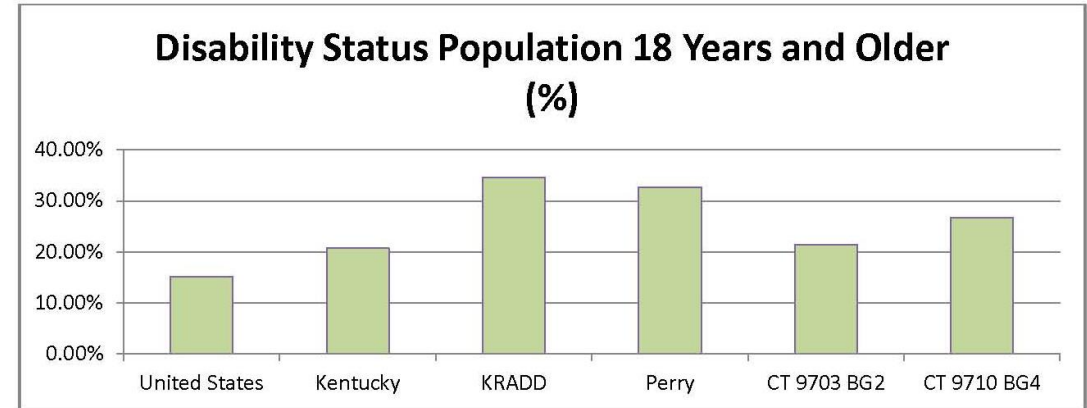
The Census tables in this report include the total number and percentages for minorities, elderly, low-income, LEP, and disabled population levels for the census tract block groups, county, region, state, and nation. This report uses the population percentages for Perry County as the reference threshold for identifying target populations. The county numbers were selected as the reference threshold because the project is completely within the county limits. The county numbers most likely provide a better snapshot of the overall population characteristics in the study area as opposed to the United States or state percentages.

The methodologies used in this planning document are appropriate for identifying areas of concern in small urban areas and potential project corridors. However, during future phases of project development a more detailed and robust analysis would be required for the NEPA documentation when assessing the potential for adverse and disproportionate impacts to poverty status, and minority populations.

# Socioeconomic Studies



## Population by Disability Status



According to 2011-2015 American Community Survey numbers, Kentucky had 20.73% percent of its population age 18 years and older with some type of disability. This is higher than the national percentage (15.08%). Perry County also reports a higher percentage of disabled persons (32.66%) than does the state and nation. Data shows Block Group (BG) 2 of Census Tract (CT) 9703 with 21.46% and BG 4 of CT 9710 with 26.72% of disabled persons, both below the percentage for the county.

	Total Population Age 16-64 Years	Disability Status Population Age 16-64	Disability Status Population 18 Years and Older
United States	235,378,737	35,484,493	15.08%
Kentucky	3,260,338	675,930	20.73%
KRADD	84,387	29,172	34.57%
Perry County	21,303	6,958	32.66%
Census Tract 9703 Block Group 2	1,011	217	21.46%
Census Tract 9710 Block Group 4	947	253	26.72%

Source: US Census Bureau, 2011-2015 American Community Survey 5-Year Estimates Table C21007

# Thank you!

Eunice Holland

Transportation Planner

ADD Planner Assistance Program Coordinator

Kentucky River ADD

[eunice.holland@kradd.org](mailto:eunice.holland@kradd.org)

